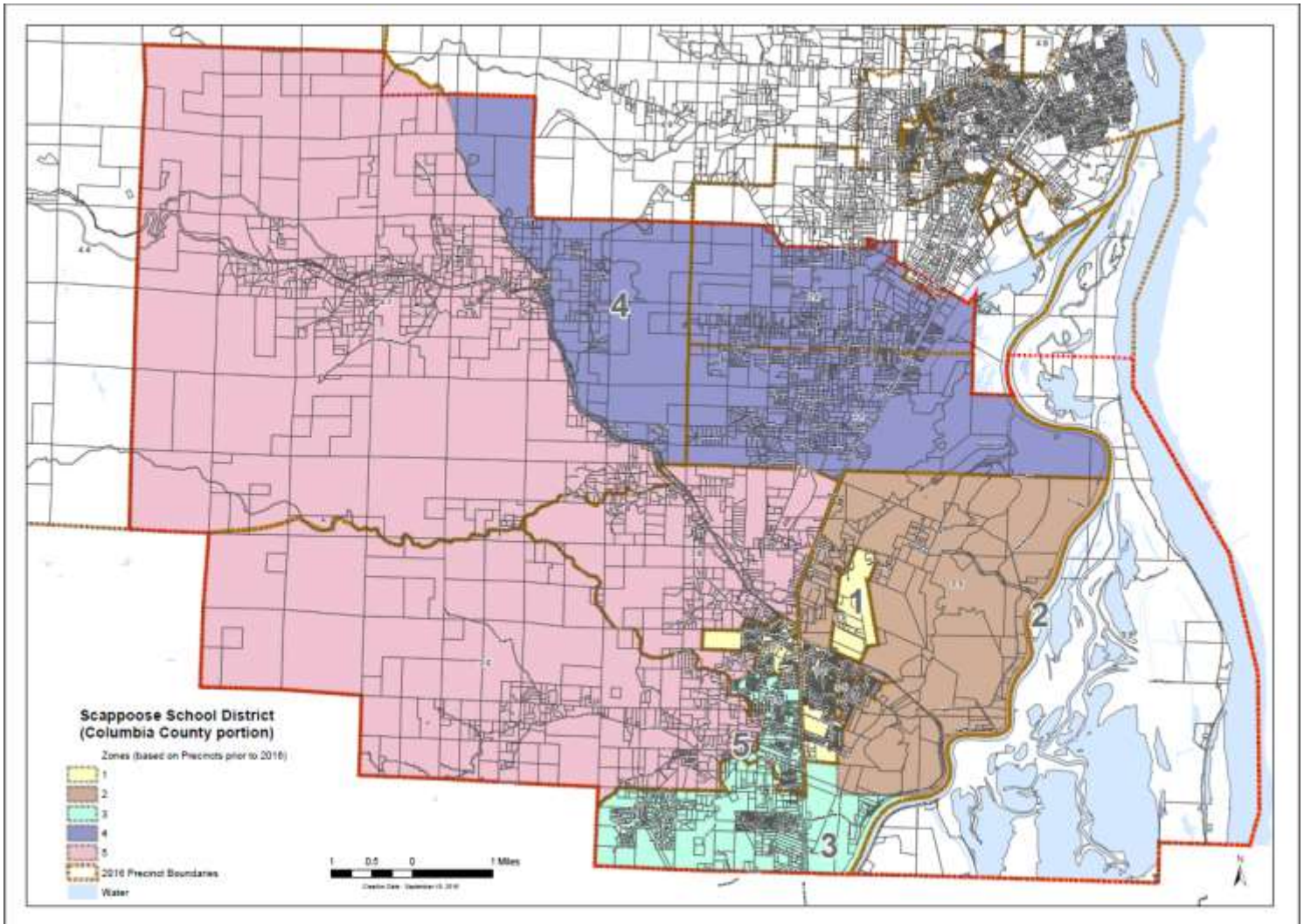


SCAPPOOSE SCHOOL DISTRICT 1J ZONE MAP

May 16 2017 District Election

Candidates must live in and be nominated by zone; elected by entire district



- Director, Zone 3- 34 Scappoose 4, 35 SE Scappoose (part), portion of Multnomah County
- Director, Zone 4- 19 S Warren, 20 N Warren, 47 Chapman (part)
- Director, Zone 5- 36 Canyon, 38 W Scappoose, 47 Chapman (part), portion of Washington County